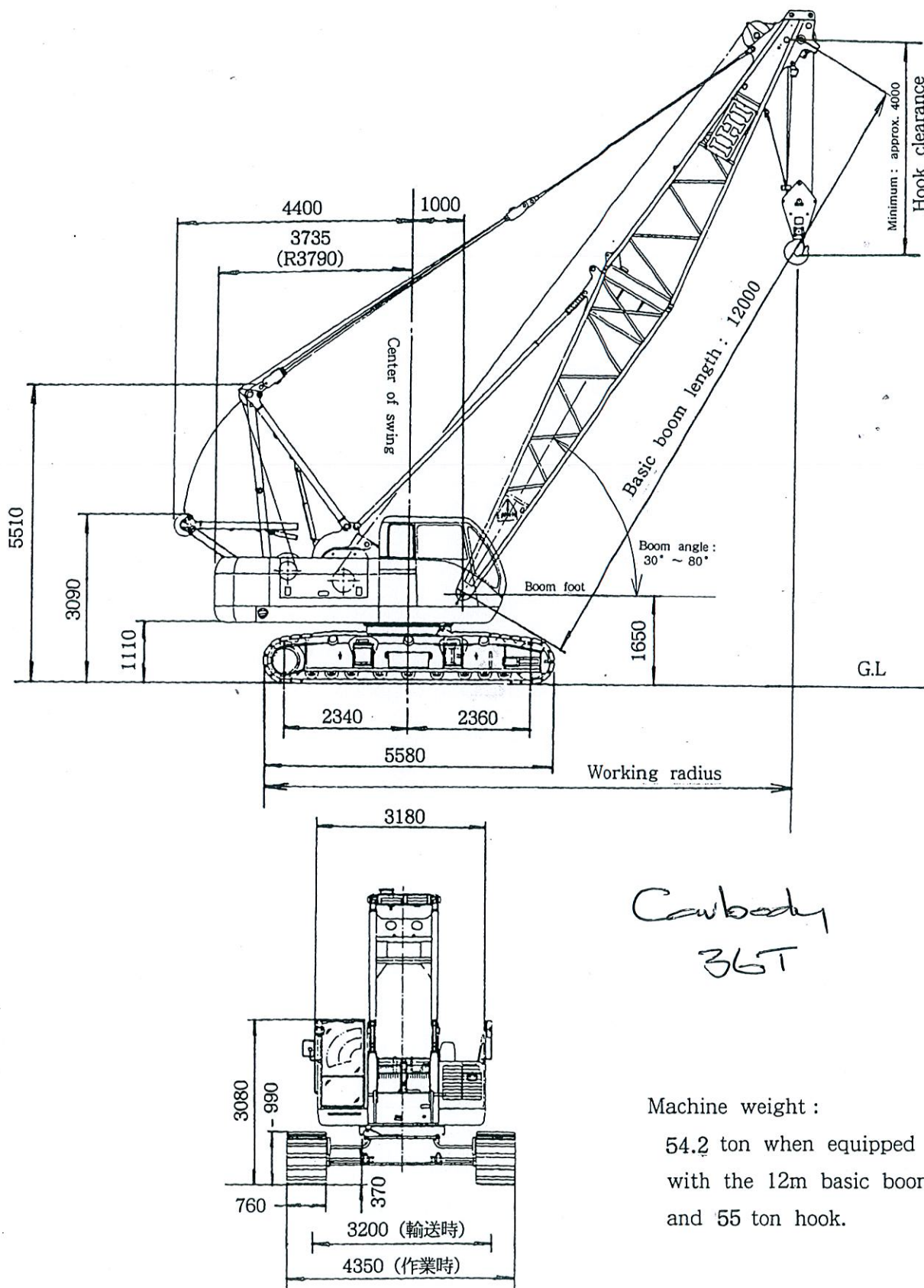


SPECIFICATIONS

1. EXTERNAL DIMENSIONS OF STANDARD CRANE



Machine weight :
 54.2 ton when equipped
 with the 12m basic boom
 and 55 ton hook.

SPECIFICATIONS

2. BASE MACHINE PERFORMANCE

(1) Speed

Name	Speed		Remarks
	High speed	Low speed	
Swing	3.3 rpm		
Traction	* 2.0 km/hr	* 1.3 km/hr	
Main hoist	* 110/80 m/min	* 55/40 m/min	1st layer on drum
Aux. hoist	* 110/80 m/min	* 55/40 m/min	1st layer on drum
Boom	* 60 m/min		1st layer on drum
Tower jib (3rd drum)	* 65 m/min		1st layer on drum

The values marked with " *" vary with load value.

(2) Gradeability

40% (22°)	In base machine configuration
-------------	-------------------------------

(3) Drum winding capacity

Name	Drum groove (rope dia.)	Capacity	Remarks
Main hoist	Lebus type (ϕ 22)	260m	8th layer
Aux. hoist	Lebus type (ϕ 22)	260m	8th layer
Boom	Lebus type (ϕ 16)	168m	8th layer
Tower jib	(ϕ 20)	138m	8th layer

The rope winding capacity does not represent the usable rope length.

(4) Combination of auxiliary jib and boom length

Aux. jib length (m)	Main jib length (m)													
	12	15	18	21	24	27	30	33	36	39	42	45	48	51
1	○	○	○	○	○	○	○	○	○	○	○	○	○	—
9	○	○	○	○	○	○	○	○	○	○	○	○	—	—
12	○	○	○	○	○	○	○	○	○	○	○	○	—	—
15	○	○	○	○	○	○	○	○	○	○	○	—	—	—
18	○	○	○	○	○	○	○	○	○	○	○	—	—	—

SPECIFICATIONS

(5) Engine

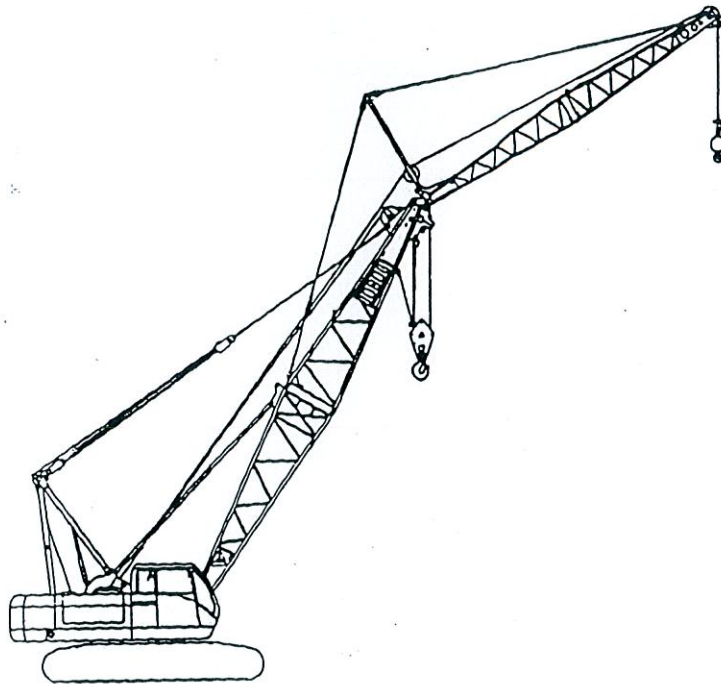
Maker	Hino Motors, Ltd.
Model	H07C - T diesel engine
Type	4 - stroke water - cooled overhead valve, direct fuel injection
No. of cylinders - diameter × stroke	6 - 110 × 118mm
Engine displacement	6.728 ℓ
Compression ratio	17.5 : 1
Rated output	180ps/2100rpm
Maximum torque	67kgfm/1,600rpm
Fuel consumption ratio	Approx. 170g/psh (2100rpm)
Min. rpm with no load	725 ± 25 rpm
Supercharger	Exhaust turbo - supercharger
Starter	24V - 5.5kW motor (Sawafuji Co., Ltd.)
Air cleaner	Dry filter paper type (Tokyo Filter Co., Ltd.)
Generator	24V AC - 45A, IC regulator built in (Sawafuji Co., Ltd.)
Battery	24V - 120AH × 2 units
Engine oil capacity	H - 24 ℓ , L - 16 ℓ (total amount 28 ℓ)
Fuel tank capacity	240 ℓ
Cooling water capacity	28 ℓ (engine alone : 13.0 ℓ)

(6) Hydraulic oil capacity

Tank oil volume for reaching level mark	300 ℓ
Total oil volume for reaching level mark	430 ℓ (in entire hydraulic system)

SPECIFICATIONS

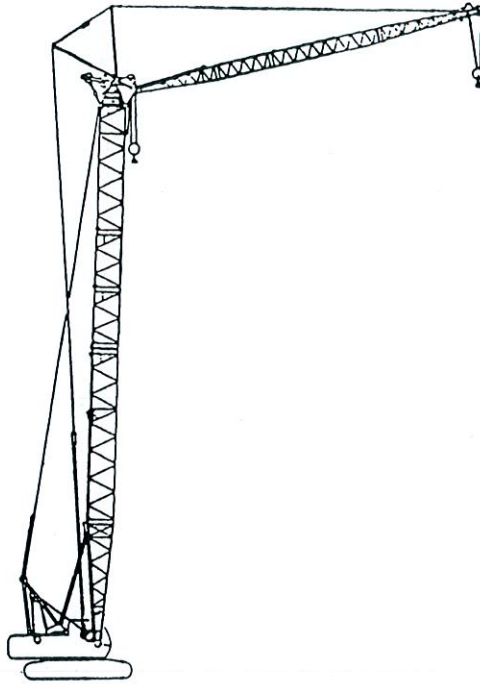
3. STANDARD CRANE PERFORMANCE



Lifting capacity	Main hoisting	Max. lifting load × working radius	55t × 3.8m
	Aux. hoisting	Max. lifting load × working radius	6.5t × 18.0m
Boom length	Main boom	Basic (inner + outer)	12m (6.5m + 5.5m)
		Maximum length	51m
	Jib boom	Minimum ~ maximum	1m, 9m, 12m, 15m, 18m
	Maximum combination of main boom and jib boom		42m + 18m = 60m
Working range	Main boom	Working radius	3.8m ~ 38.0m
	Jib boom	Working radius	7.0m ~ 40m
	Main boom	Max. lifting height above ground (with 51m main boom)	Approx. 48m
	Jib boom	Max. lifting height above ground (with 45m + 12m)	Approx. 53m
	Main boom	Boom angle	30° ~ 80°
	Jib boom	Boom angle	58° ~ 80°
Number of rope parts	Main hoisting	55-ton hook	2 to 9 part of line
	Aux. hoisting	6.5-ton hook	1 part of line
	Boom hoisting		12 part of line
Counterweight	Upper + central + lower		19.0t (6.4t + 6.3t + 6.3t)
Working weight	With main boom 12m long		54.3t
Average grounding pressure	With main boom 12m long		0.71kgf/cm ²

SPECIFICATIONS

4. LUFFING JIB CRANE PERFORMANCE

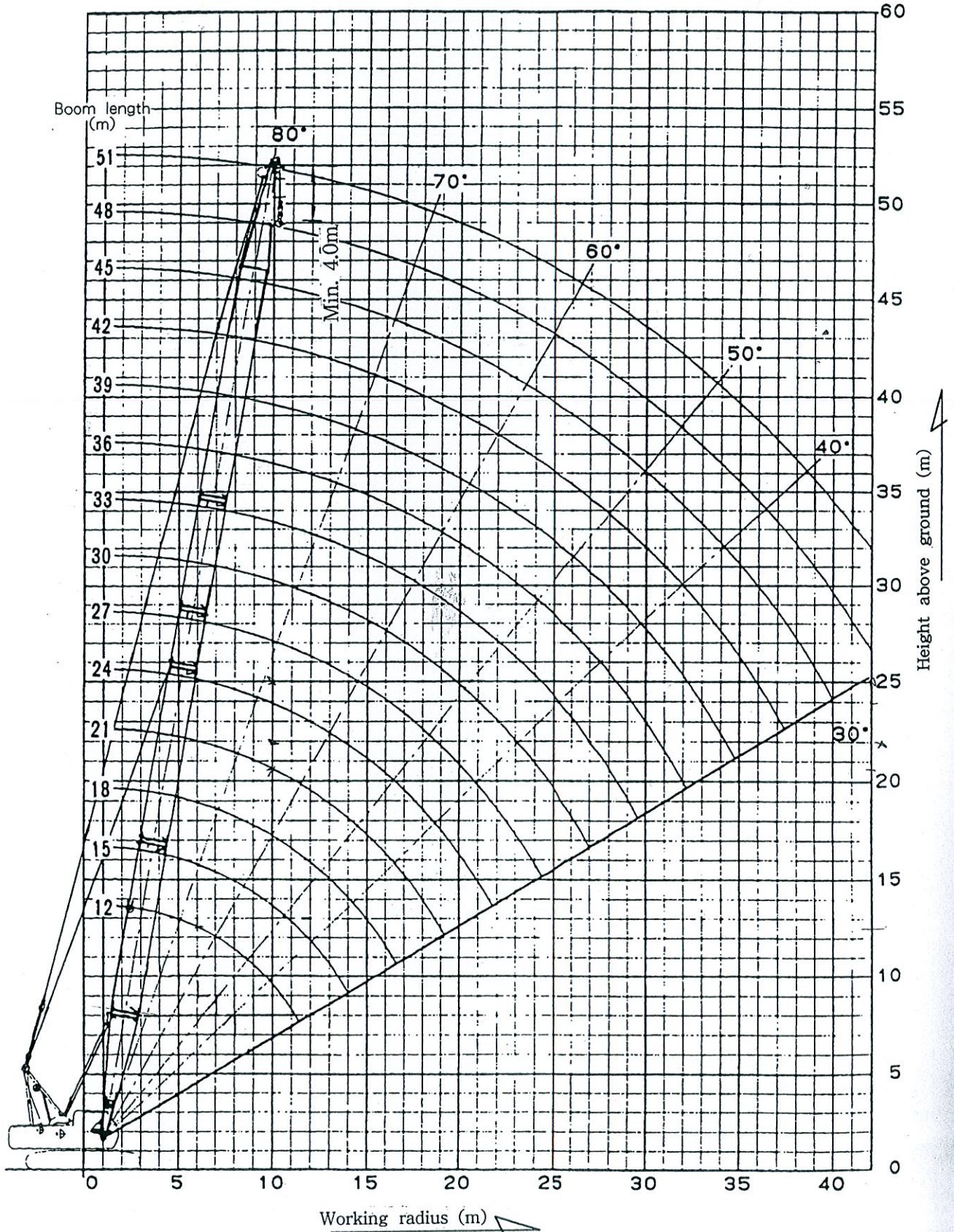


SPECIFICATIONS

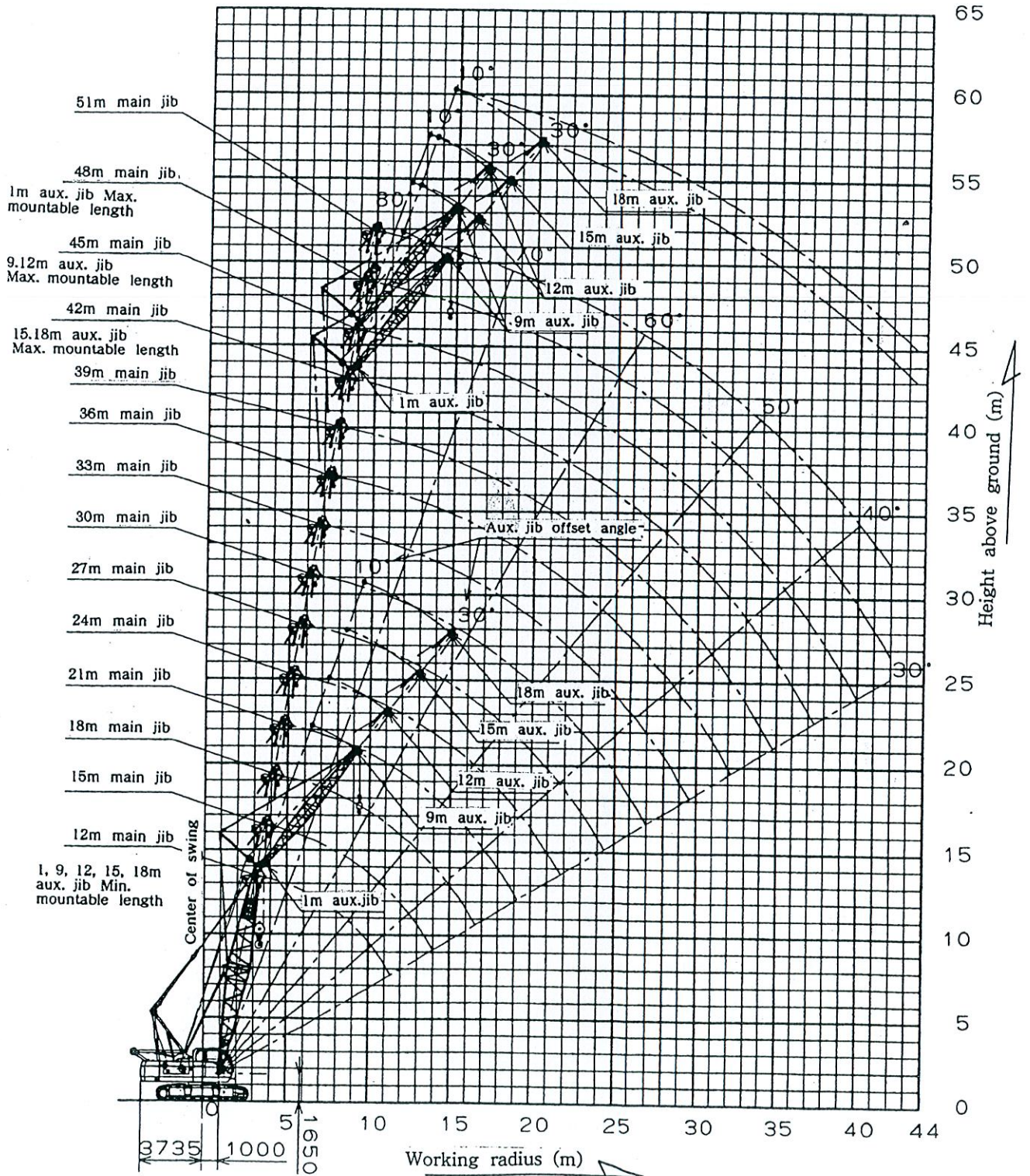
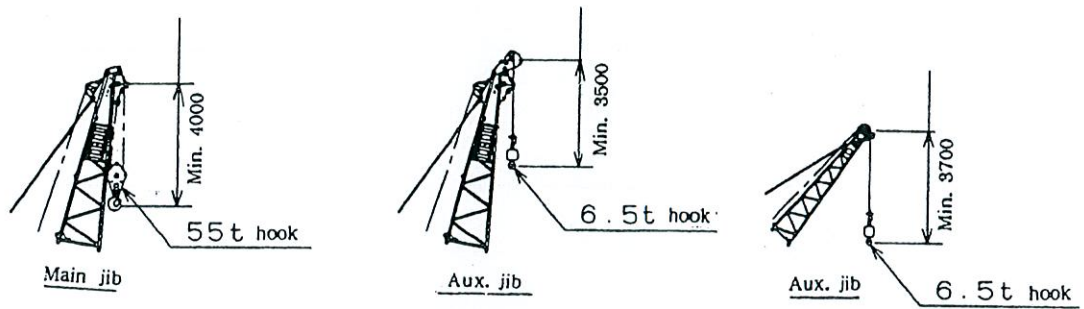
5. WORKING RANGE DIAGRAM

5-1 Standrad crane with main boom

The actual lifting height is the value obtained by subtracting 4m of hook clearance.



5-2 Standrad crane with auxiliary jib



SPECIFICATIONS

6. RATED OVERALL LIFTING LOAD TABLE OF STANDARD CRANE

6-1 Main boom rated overall lifting load table

Units : Load (t) Angle (degrees)

Main jib length(m)	12.0	15.0	18.0	21.0	24.0	27.0	30.0	33.0	36.0	39.0	42.0	45.0	48.0	51.0
Working radius(m)	Load	Angle	Load	Angle	Load	Angle	Load	Angle	Load	Angle	Load	Angle	Load	Angle
3.8	55.00	78.0	$\frac{3.9m}{\times 53.40}$ 80.0											
4.0	52.00	77.0	$\frac{4.4m}{\times 46.35}$ 80.0											
4.5	45.15	74.5	45.10	77.5	45.05	79.5								
5.0	38.85	72.0	38.80	75.5	38.75	78.0	38.65	80.0						
5.5	33.45	69.5	33.40	73.5	33.30	76.5	33.25	78.5	$\frac{5.9m}{\times 29.65}$ 80.0					
6.0	29.20	66.5	29.15	71.5	29.05	75.0	29.00	77.0	28.90	78.5	28.85	80.0	$\frac{6.5m}{\times 25.45}$ 80.0	
7.0	23.30	61.5	23.20	67.5	23.15	71.5	23.05	74.0	23.00	76.0	22.90	78.0	22.85	79.0
8.0	19.35	55.5	19.25	63.5	19.20	68.0	19.10	71.5	19.00	73.5	18.95	75.5	18.85	77.0
9.0	16.45	49.5	16.40	58.5	16.30	64.5	16.20	68.5	16.15	71.0	16.05	73.5	15.95	75.0
10.0	14.30	43.0	14.25	54.0	14.15	61.0	14.05	65.5	14.00	68.5	13.90	71.0	13.80	73.0
12.0	$\frac{11.5m}{\times 11.95}$ 30.0	11.25	44.0	11.15	53.0	11.05	59.0	11.00	63.5	10.90	66.5	10.80	69.0	71.0
14.0		9.15	31.0	9.10	44.5	9.00	52.5	8.90	58.0	8.80	62.0	8.75	65.0	68.5
16.0		$\frac{14.1m}{\times 9.10}$	30.0	7.60	34.5	7.50	45.0	7.40	52.0	7.35	57.0	7.25	60.5	64.5
18.0			$\frac{16.7m}{\times 7.15}$ 30.0	6.40	36.5	6.30	45.5	6.20	51.5	6.15	56.0	6.05	59.5	63.5
20.0			$\frac{19.3m}{\times 5.80}$ 30.0	5.80	38.5	5.35	46.0	5.30	51.0	5.20	55.5	5.10	58.5	62.5
22.0				$\frac{21.9m}{\times 4.80}$ 30.0	4.70	39.5	4.60	46.0	51.0	4.50	51.0	4.40	55.0	59.0
24.0					4.10	41.0	4.00	40.5	46.5	3.95	46.5	3.85	50.5	54.5
26.0					$\frac{24.5m}{\times 4.00}$ 30.0	3.55	34.0	3.55	34.0	3.45	41.0	3.35	46.5	50.5
28.0						$\frac{27.1m}{\times 3.30}$ 30.0	3.05	35.5	30.0	3.05	35.5	2.95	42.0	46.5
30.0							$\frac{29.7m}{\times 2.75}$ 30.0	2.60	37.0	2.50	42.5	2.40	46.5	50.5
32.0								2.30	31.0	2.20	38.0	2.10	43.0	47.0
34.0								$\frac{32.3m}{\times 2.25}$ 30.0	1.90	32.5	1.80	38.5	1.70	43.0
36.0									$\frac{34.9m}{\times 1.75}$ 30.0	1.55	31.5	1.45	40.0	44.0
38.0										$\frac{37.5m}{\times 1.35}$ 30.0	1.20	36.0	1.10	40.5

- [Notes]**
- The above rated overall lifting load values are based on firm, level ground within 78% of tipping load at any point 360° around the machine with a front stability of 1.15 or more.
 - The working radius means the horizontal distance from the swing center to the hook position.
 - The actual lifting load is obtained by subtracting the weight of all lifting devices including the hook from the value listed in this table.
 55t hook...0.65t 35t hook...0.50t 15t hook...0.45t
 45t hook...0.55t 25t hook...0.50t 6.5t hook...0.25t
 - The length of main jib on which auxiliary jib can be mounted is as follows.
 Aux. jib length (m) 1.0 9.0 12.0 15.0 18.0

- For crane work, be sure to extend the crawler and raise the A frame.
 - The rated loads for a 1m-long auxiliary jib are 0.4 tons less than the above rated loads corresponding to the length of the main jib on which the auxiliary jib is mounted. The rated loads for a 9.0 ~ 18.0m-long auxiliary jib are equal to the above rated loads corresponding to the length of the main jib on which the auxiliary jib is mounted. (Refer to the aux. jib rated overall lifting load table.) In either case, the values shown in the table below should not be exceeded.
- | Aux. jib length (m) | 1.0 | 9.0 | 12.0 | 15.0 | 18.0 |
|-------------------------------------|------|------|------|------|------|
| Aux. jib mounting angle | ~ | 10° | 30° | 10° | 30° |
| Max. rated overall lifting load (t) | 6.50 | 6.50 | 6.00 | 5.50 | 4.00 |
- With the main hook installed, loads that can actually be lifted with the auxiliary jib are calculated by subtracting the total weight of the main and auxiliary hooks from the above rated loads.
 - The rated overall lifting loads are restricted depending on the number of wire rope parts as follows.
 6.5t max...1 - part line 32.5t max...5 - part line 55.0t max...9 - part line
 13.0t max...2 - part line 39.0t max...6 - part line
 19.5t max...3 - part line 45.5t max...7 - part line
 26.0t max...4 - part line 52.0t max...8 - part line
 - The section circled with a thick line shows the values determined by the strength of main jib, etc.

Aux. jib length (m)	1.0	9.0	12.0	15.0	18.0
Main jib length (m)	12.0~48.0	12.0~45.0	12.0~42.0	12.0~42.0	12.0~42.0

When an auxiliary jib is mounted, the rated loads at the main hook are calculated by subtracting the following weights (including the weight of an auxiliary hook) from the above rated loads.

Aux. jib length (m)	1.0	9.0	12.0	15.0	18.0
Load to be subtracted (t)	0.40	1.20	1.50	1.80	2.10

SPECIFICATIONS

6-2 1m auxiliary jib rated overall lifting load table

Unit : t

Main jib length(m) Working radius(m)	12.0	15.0	18.0	21.0	24.0	27.0	30.0	33.0	36.0	39.0	42.0	45.0	48.0	51.0
4.0	3.9m × 6.50	4.4m × 6.50												
5.0	6.50	6.50	6.50	5.5m × 6.50										
6.0	6.50	6.50	6.50	6.50	6.50	6.5m × 6.50								
7.0	6.50	6.50	6.50	6.50	6.50	6.50	7.6m × 6.50							
8.0	6.50	6.50	6.50	6.50	6.50	6.50	6.50	8.1m × 6.50	8.6m × 6.50					
9.0	6.50	6.50	6.50	6.50	6.50	6.50	6.50	6.50	6.50	9.1m × 6.50	9.7m × 6.50			
10.0	6.50	6.50	6.50	6.50	6.50	6.50	6.50	6.50	6.50	6.50	6.50	10.2m × 6.50		
12.0	6.50	6.50	6.50	6.50	6.50	6.50	6.50	6.50	6.50	6.50	6.50	6.50	6.50	
14.0	12.5m × 6.50	6.50	6.50	6.50	6.50	6.50	6.50	6.50	6.50	6.50	6.50	6.50	15.8m × 6.50	
16.0		15.1m × 6.50	17.2m × 6.50	6.50	16.8m × 6.50	16.7m × 6.50	16.5m × 6.50	16.4m × 6.50	16.2m × 6.50	16.1m × 6.50	6.50	6.40	6.30	
18.0			17.7m × 6.25	6.50	5.90	5.80	5.75	5.65	5.55	5.45	5.40	5.30	5.20	
20.0				5.15	5.05	4.95	4.90	4.80	4.70	4.60	4.50	4.45	4.35	
22.0				20.3m × 5.05	4.35	4.30	4.20	4.10	4.00	3.90	3.85	3.75	3.65	
24.0					22.9m × 4.10	3.70	3.60	3.55	3.45	3.35	3.25	3.15	3.10	
26.0						25.5m × 3.35	3.15	3.05	2.95	2.90	2.80	2.70	2.60	
28.0							28.1m × 2.75	2.65	2.55	2.45	2.40	2.30	2.20	
30.0								2.30	2.20	2.10	2.00	1.95	1.85	
32.0								30.7m × 2.20	1.90	1.80	1.70	1.60	1.50	
34.0									33.3m × 1.70	1.50	1.40	1.30	1.20	
36.0										35.9m × 1.25	1.15	1.05	0.95	
38.0											0.90	0.80	0.70	

[Notes]

1. The above rated overall lifting load values are based on firm, level ground within 78° of tipping load at any point 360° around the machine with a front stability of 1.15 or more.
2. The working radius means the horizontal distance from the swing center to the hook position.
3. With the main hook installed, loads that can actually be lifted with the auxiliary jib are calculated by subtracting the total weight of the main and auxiliary hooks from the above rated loads.
 55t hook...0.65t 35t hook...0.50t 15t hook...0.45t
 45t hook...0.55t 25t hook...0.50t 6.5t hook...0.25t

SPECIFICATIONS

6-3 9m~18m auxiliary jib rated overall lifting load table

Unit : t

Main jib length(m) Aux. jib length(m) Aux. jib offset angle Working radius(m)	12.0						15.0						18.0						21.0	
	9.0		12.0		15.0		18.0		9.0		12.0		15.0		18.0		21.0			
	10°	30°	10°	30°	10°	30°	10°	30°	10°	30°	10°	30°	10°	30°	10°	30°	10°	30°		
7.0	6.6m × 6.50	7.7m × 6.50																		
8.0	6.50	6.50	8.6m × 5.50				8.2m × 6.50								8.7m × 6.50				8.2m × 6.50	
9.0	6.50	6.50	9.3m × 6.00	5.50			9.8m × 6.00	9.1m × 5.50						6.50	9.6m × 5.50				6.50	
10.0	6.50	6.50	11.3m × 5.00	5.50			11.8m × 5.00	5.50						6.50	10.4m × 6.00	5.50			10.9m × 6.00	
12.0	6.50	6.50	13.1m × 4.00	5.50			14.8m × 3.50	4.50						6.50	12.3m × 5.00	5.50			6.50	
14.0	6.50	6.50	14.8m × 3.50	4.00			15.3m × 3.50	4.50						6.50	14.2m × 4.00	5.50			15.8m × 3.50	
16.0	6.50	6.50	16.0m × 3.50	4.00			16.0m × 3.50	4.00						6.50	16.0m × 3.50	4.00			6.50	
18.0	6.50	6.50	18.0m × 3.50	4.00			18.0m × 3.50	4.00						6.50	18.0m × 3.50	4.00			6.50	
20.0	5.80	5.80	20.0m × 5.50	5.50			20.0m × 5.50	5.50						5.65	20.0m × 5.50	5.50			5.55	
22.0	20.5m × 5.50	21.1m × 5.40	5.10	4.00			23.1m × 4.70	5.05						4.95	23.1m × 4.70	4.95			4.85	
24.0		23.4m × 4.70	24.1m × 4.55	4.55			23.7m × 4.55	4.45						4.40	23.7m × 4.55	4.40			4.30	
26.0			26.1m × 4.05	4.00			26.7m × 3.85	4.00						3.90	26.7m × 3.85	3.90			3.80	
28.0			27.1m × 3.85	3.70			28.7m × 3.50	3.60						3.50	28.7m × 3.50	3.50			3.40	
30.0			28.8m × 3.55	3.01m × 3.85			29.7m × 3.30	3.25						28.6m × 3.40	29.3m × 3.80	3.15			28.3m × 3.55	
32.0							31.4m × 3.05	2.95						31.3m × 2.95	2.85				2.85	
34.0							32.7m × 2.85	2.60						32.3m × 2.80	2.60				2.60	
36.0																			35.3m × 2.45	
38.0																				
40.0																				

[Notes]

1. The above rated overall lifting load values are based on firm, level ground within 78% of tipping load at any point 360° around the machine with a front stability of 1.15 or more.
2. The working radius means the horizontal distance from the swing center to the hook position.
3. With the main hook installed, loads that can actually be lifted with the auxiliary jib are calculated by subtracting the total weight of the main and auxiliary hooks from the above rated loads.
 55t hook--0.65t 35t hook--0.50t 15t hook--0.45t
 45t hook--0.55t 25t hook--0.50t 6.5t hook--0.25t

Unit : t

Main jib length(m) Aux. jib length(m) Aux. jib offset angle Working radius(m)	21.0						24.0						27.0						30.0							
	12.0		15.0		18.0		9.00		12.0		15.0		18.0		9.0		12.0		15.0		18.0		9.0		12.0	
	10°	30°	10°	30°	10°	30°	10°	30°	10°	30°	10°	30°	10°	30°	10°	30°	10°	30°	10°	30°	10°	30°	10°	30°	10°	30°
7.0																										
8.0																										
9.0	9.3m × 6.50						8.7m × 6.50						9.2m × 6.50											9.7m × 6.50		
10.0	6.50	10.2m × 5.50			10.9m × 4.50		6.50	9.8m × 6.50			10.7m × 5.50		6.50	10.3m × 6.50			11.2m × 5.50					6.50	10.8m × 6.50			
12.0	6.50	12.9m × 5.00	5.50		4.50		6.50	11.4m × 6.00	6.50		5.50		6.50	11.9m × 6.00	6.50		5.50				11.9m × 4.50	6.50	12.4m × 6.00	6.50		
14.0	6.50	5.00	5.50	14.7m × 4.00	4.50		6.50	6.00	6.50	13.4m × 5.00	5.50		4.50	6.50	6.00	6.50	13.9m × 5.00	5.50	15.7m × 4.00	4.50		6.50	6.00	6.50	14.4m × 5.00	
16.0	6.50	5.00	5.50	4.00	4.50	16.4m × 3.50	6.50	6.00	6.50	5.00	5.50	15.2m × 4.00	4.50	16.9m × 3.50	6.50	6.00	6.50	5.00	4.00	4.50	17.4m × 3.50	6.50	6.00	6.50	5.00	
18.0	6.40	5.00	5.50	4.00	4.50	3.50	6.30	6.00	6.30	5.00	5.50	4.00	4.50	3.50	6.20	6.00	6.20	5.00	4.00	4.50	3.50	6.15	6.00	6.15	5.00	
20.0	5.55	5.00	5.50	4.00	4.50	3.50	5.45	5.45	5.45	5.00	5.45	4.00	4.50	3.50	5.35	5.35	5.35	5.00	3.50	4.00	4.50	3.50	5.30	5.30	5.00	
22.0	4.85	4.85	4.85	4.00	4.50	3.50	4.75	4.75	4.75	4.75	4.75	4.00	4.50	3.50	4.70	4.70	4.70	4.70	4.00	4.00	4.50	3.50	4.60	4.60	4.60	
24.0	4.30	4.30	4.30	4.00	4.30	3.50	4.20	4.20	4.20	4.20	4.20	4.00	4.20	3.50	4.10	4.10	4.10	4.10	4.00	4.00	4.10	3.50	4.00	4.00	4.00	
26.0	3.80	3.80	3.80	3.80	3.80	3.50	3.75	3.75	3.75	3.75	3.75	3.75	3.75	3.50	3.65	3.65	3.65	3.65	3.65	3.65	3.65	3.50	3.55	3.55	3.55	
28.0	3.40	3.40	3.40	3.40	3.40	3.40	3.35	3.35	3.35	3.35	3.35	3.35	3.35	3.35	3.25	3.25	3.25	3.25	3.25	3.25	3.25	3.25	3.15	3.15	3.15	
30.0	3.05	3.05	3.05	3.05	3.05	3.05	3.00	3.00	3.00	3.00	3.00	3.00	3.00	3.00	2.90	2.90	2.90	2.90	2.90	2.90	2.90	2.80	2.80	2.80	2.80	
32.0	31.2m × 2.90	31.9m × 2.75	2.75	2.75	2.75	2.75	30.9m × 2.85	31.5m × 2.75	2.65	2.65	2.65	2.65	2.65	2.65	2.55	2.55	2.55	2.55	2.55	2.55	2.55	2.50	2.50	2.50	2.50	
34.0		33.9m × 2.50	2.50	2.50	2.50	2.50	33.8m × 2.40		33.8m × 2.40	2.40	2.40	2.40	2.40	2.40	33.5m × 2.35	34.1m × 2.30	2.30	2.30	2.30	2.30	2.30	2.20	2.20	2.20	2.20	
36.0			34.9m × 2.40	2.25	2.25	2.25			34.5m × 2.35	2.15	2.15	2.15	2.15	2.15		2.05	2.05	2.05	2.05	2.05	2.05	1.95	1.95	1.95	1.95	
38.0				36.6m × 2.20	37.9m × 2.05	2.05				36.5m × 2.10	37.5m × 2.00	1.95	1.95	1.95		36.4m × 2.00	37.1m × 1.95	1.85	1.85	1.85	1.85	1.85	1.75	1.75	1.75	
40.0												39.2m × 1.80	1.75	1.75			39.1m × 1.75	1.65	1.65	1.65	1.65					

SPECIFICATIONS

Unit : t

Main jib length(m) Aux. jib length(m) Aux. jib offset angle Working radius(m)	30.0						33.0						36.0						39.0									
	15.0		18.0		9.0		12.0		15.0		18.0		9.0		12.0		15.0		18.0		9.0		12.0		15.0			
	10°	30°	10°	30°	10°	30°	10°	30°	10°	30°	10°	30°	10°	30°	10°	30°	10°	30°	10°	30°	10°	30°	10°	30°	10°	30°		
7.0																												
8.0																												
9.0																												
10.0	11.7m × 5.50		10.2m × 6.50		11.3m × 6.50		12.2m × 5.50		13.0m × 4.50		10.8m × 6.50		13.5m × 6.00	11.9m × 6.50		12.8m × 5.50		13.5m × 4.50		11.3m × 6.50								
12.0	5.50	12.5m × 4.50	6.50	12.4m × 6.00	6.50	6.50	12.2m × 5.50	6.50	13.0m × 4.50	6.50	6.50	13.5m × 6.00	6.50	13.5m × 6.00	6.50	12.8m × 5.50	6.50	13.5m × 4.50	6.50	6.50	12.4m × 6.50	6.50	13.3m × 5.50	6.50	6.50	6.50	6.50	6.50
14.0	5.50	4.50	6.50	6.00	6.50	6.50	5.50	5.50	4.50	6.50	6.50	6.50	6.50	6.50	6.50	5.50	5.50	4.50	6.50	6.50	6.00	6.50	6.50	6.50	6.50	6.50	6.50	6.50
16.0	5.50	16.2m × 4.00	4.50	6.50	6.00	6.50	5.50	5.50	4.50	6.50	6.50	6.50	6.50	6.50	6.50	5.50	5.50	4.50	6.50	6.50	6.00	6.50	6.50	6.50	6.50	6.50	6.50	6.50
18.0	5.50	4.00	4.50	17.9m × 3.50	6.05	6.00	6.05	5.00	4.00	4.50	5.95	5.95	5.95	5.95	5.00	5.50	4.00	4.50	19.0m × 3.50	5.85	5.85	5.85	5.85	5.85	5.85	5.85	5.85	5.85
20.0	5.30	4.00	4.50	3.50	5.20	5.20	5.00	5.00	4.00	4.50	5.10	5.10	5.10	5.00	5.10	4.00	4.00	4.50	3.50	5.00	5.00	5.00	5.00	5.00	5.00	5.00	5.00	5.00
22.0	4.60	4.00	4.50	3.50	4.50	4.50	4.50	4.50	4.00	4.50	4.40	4.40	4.40	4.40	4.40	4.40	4.40	4.40	3.50	4.30	4.30	4.30	4.30	4.30	4.30	4.30	4.30	4.30
24.0	4.00	4.00	4.00	3.50	3.95	3.95	3.95	3.95	3.95	3.95	3.85	3.85	3.85	3.85	3.85	3.85	3.85	3.85	3.50	3.75	3.75	3.75	3.75	3.75	3.75	3.75	3.75	3.75
26.0	3.55	3.55	3.55	3.50	3.45	3.45	3.45	3.45	3.45	3.45	3.35	3.35	3.35	3.35	3.35	3.35	3.35	3.35	3.35	3.30	3.30	3.30	3.30	3.30	3.30	3.30	3.30	3.30
28.0	3.15	3.15	3.15	3.15	3.05	3.05	3.05	3.05	3.05	3.05	2.95	2.95	2.95	2.95	2.95	2.95	2.95	2.95	2.95	2.85	2.85	2.85	2.85	2.85	2.85	2.85	2.85	2.85
30.0	2.80	2.80	2.80	2.80	2.70	2.70	2.70	2.70	2.70	2.70	2.60	2.60	2.60	2.60	2.60	2.60	2.60	2.60	2.60	2.50	2.50	2.50	2.50	2.50	2.50	2.50	2.50	2.50
32.0	2.50	2.50	2.50	2.50	2.40	2.40	2.40	2.40	2.40	2.40	2.30	2.30	2.30	2.30	2.30	2.30	2.30	2.30	2.30	2.20	2.20	2.20	2.20	2.20	2.20	2.20	2.20	2.20
34.0	2.20	2.20	2.20	2.20	2.10	2.10	2.10	2.10	2.10	2.10	2.00	2.00	2.00	2.00	2.00	2.00	2.00	2.00	2.00	1.90	1.90	1.90	1.90	1.90	1.90	1.90	1.90	1.90
36.0	1.95	1.95	1.95	1.95	1.85	1.85	1.85	1.85	1.85	1.85	1.75	1.75	1.75	1.75	1.75	1.75	1.75	1.75	1.75	1.65	1.65	1.65	1.65	1.65	1.65	1.65	1.65	1.65
38.0	1.75	1.75	1.75	1.75	1.65	1.65	1.65	1.65	1.65	1.65	1.50	1.50	1.50	1.50	1.50	1.50	1.50	1.50	1.50	1.40	1.40	1.40	1.40	1.40	1.40	1.40	1.40	1.40
40.0	1.55	1.55	1.55	1.55	1.45	1.45	1.45	1.45	1.45	1.45	1.30	1.30	1.30	1.30	1.30	1.30	1.30	1.30	1.30	1.20	1.20	1.20	1.20	1.20	1.20	1.20	1.20	1.20

